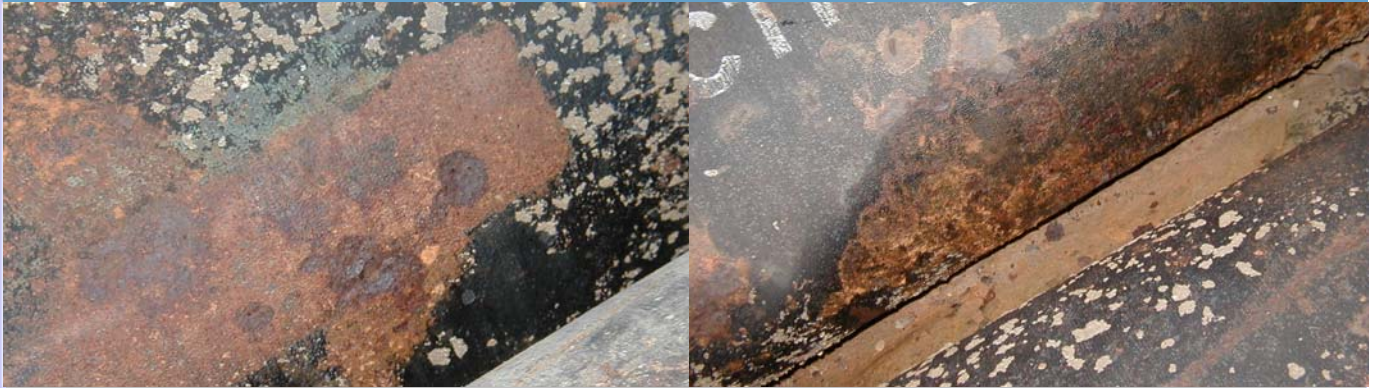


CPSI Project Showcase - Sacrificial Anode Retrofit

Problem: Advanced Corrosion Pitting on an Existing Water Main



Issues Relating to the Customer's Corrosion Problem:

- ◆ Ductile iron water pipe was uncovered and showed advanced corrosion pitting
- ◆ Water main is located under roadway intended for future widening and repaving
- ◆ Water utility could not afford a corrosion failure on such a critical feeder water main

Solution: Retrofit Sacrificial Anodes to the Existing Water Main



Benefits of the Solution to the Customer's Corrosion Problem:

- ◆ Cathodic protection anodes were installed with minimal traffic/pavement disruption
- ◆ Further corrosion is being mitigated through the application of cathodic protection
- ◆ Water utility has the means and measures to verify the cathodic protection is working



CP Solutions, Inc.[®]
SUSTAINING INFRASTRUCTURE



For more information,
please visit the website:
www.cpsolutionsinc.net